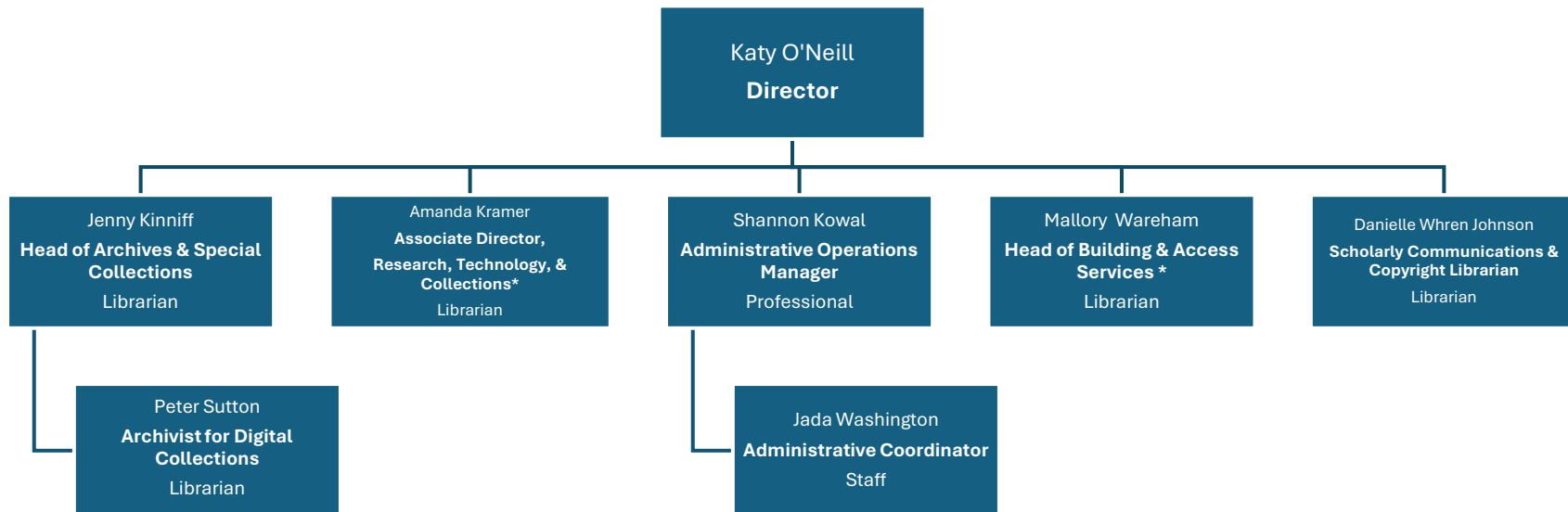


## LNDL Organization Chart – June 4, 2025



*\*Missy Laytham, Assistant Director, reports to the Director through 6.30.25.*

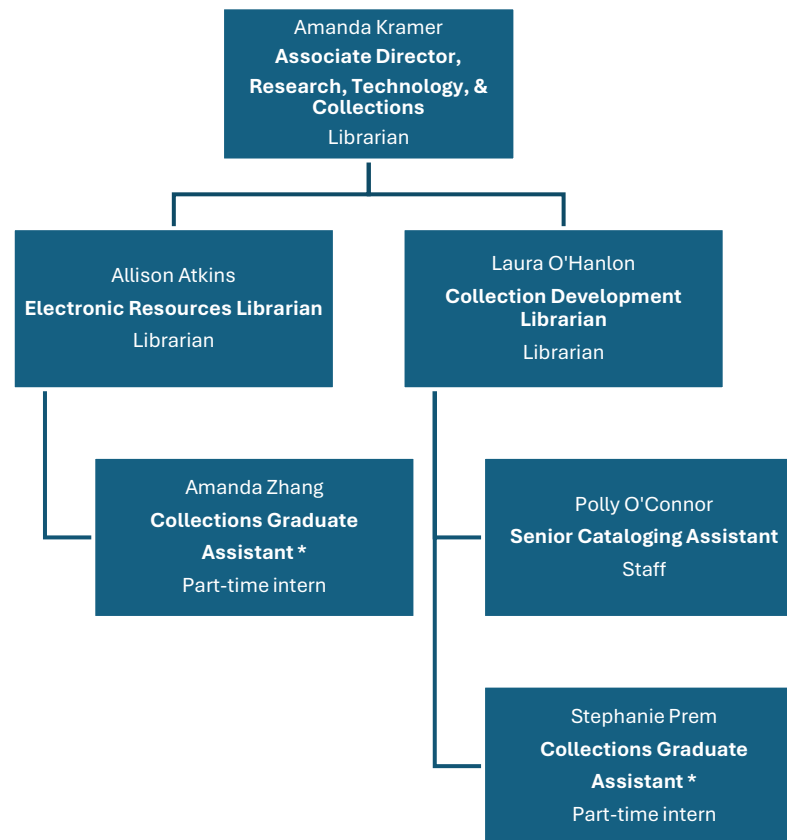
*\*See detailed org charts*

## LNDL Organization Chart – June 4, 2025



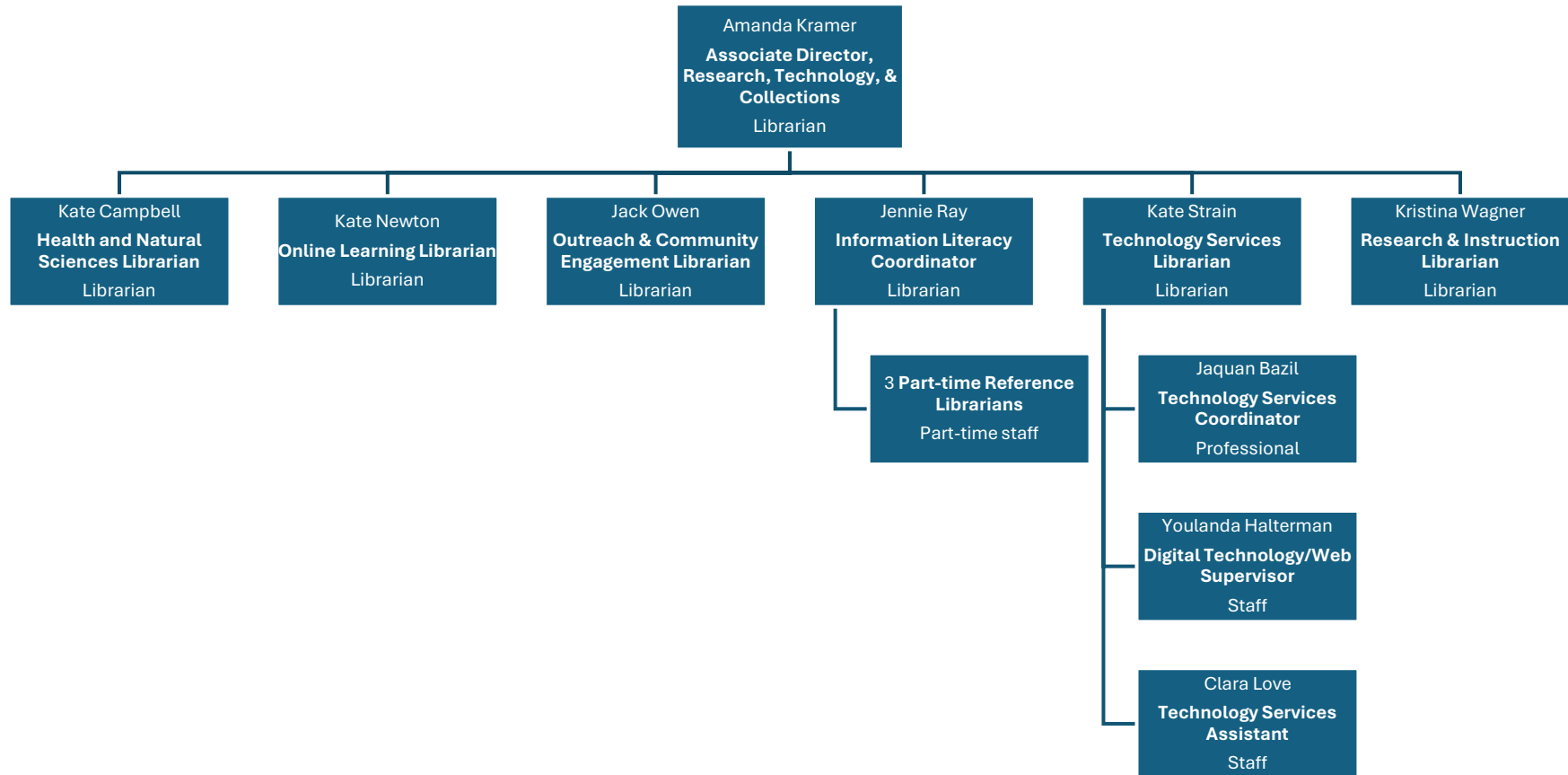
*\*Access Services/Evening Supervisors:* Elyse Fritsch, Pau Rivera, and TBD;  
*Alternate Access Services/Evening Supervisor:* Marley Holt-Williams

## LNDL Organization Chart – June 4, 2025



\* Graduate Assistants

## LNDL Organization Chart – June 4, 2025



\* *Reference Librarians*: Renise Johnson, Will Johnson, Aaron Murphy (part-time/evenings and weekends)

\*\* Graduate assistant